

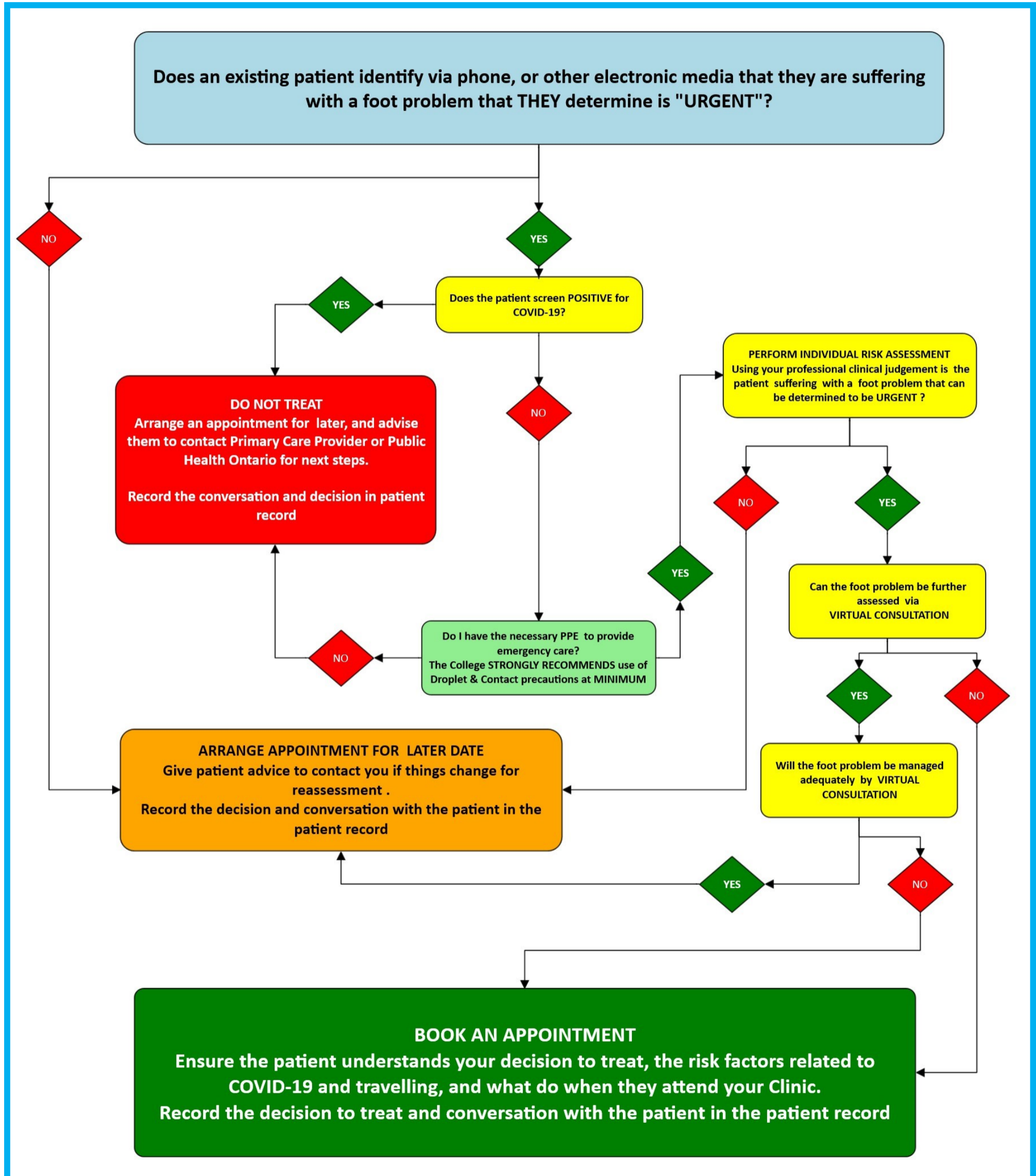


Decision Tree for Community Based Members in Private Practice

The following algorithm is for community based members in private practice settings to support decision making during the COVID –19 pandemic.

It is NOT designed to replace individual risk assessment , which must be carried out for each patient.

Members in private practice cannot treat patients in their offices unless the patient requires urgent care and the member is able to maintain IPAC standards. Members should refer to the COCOO Member IPAC Flowchart during COVID -19 Pandemic (<http://cocoo.on.ca/>) to assist in determining the appropriate IPAC decision to be made of any patient which they are considering providing urgent care in their offices



Based on Decision Tree for Independent Practitioners www.cop.org.uk with permission of the College of Podiatrists (U.K.)